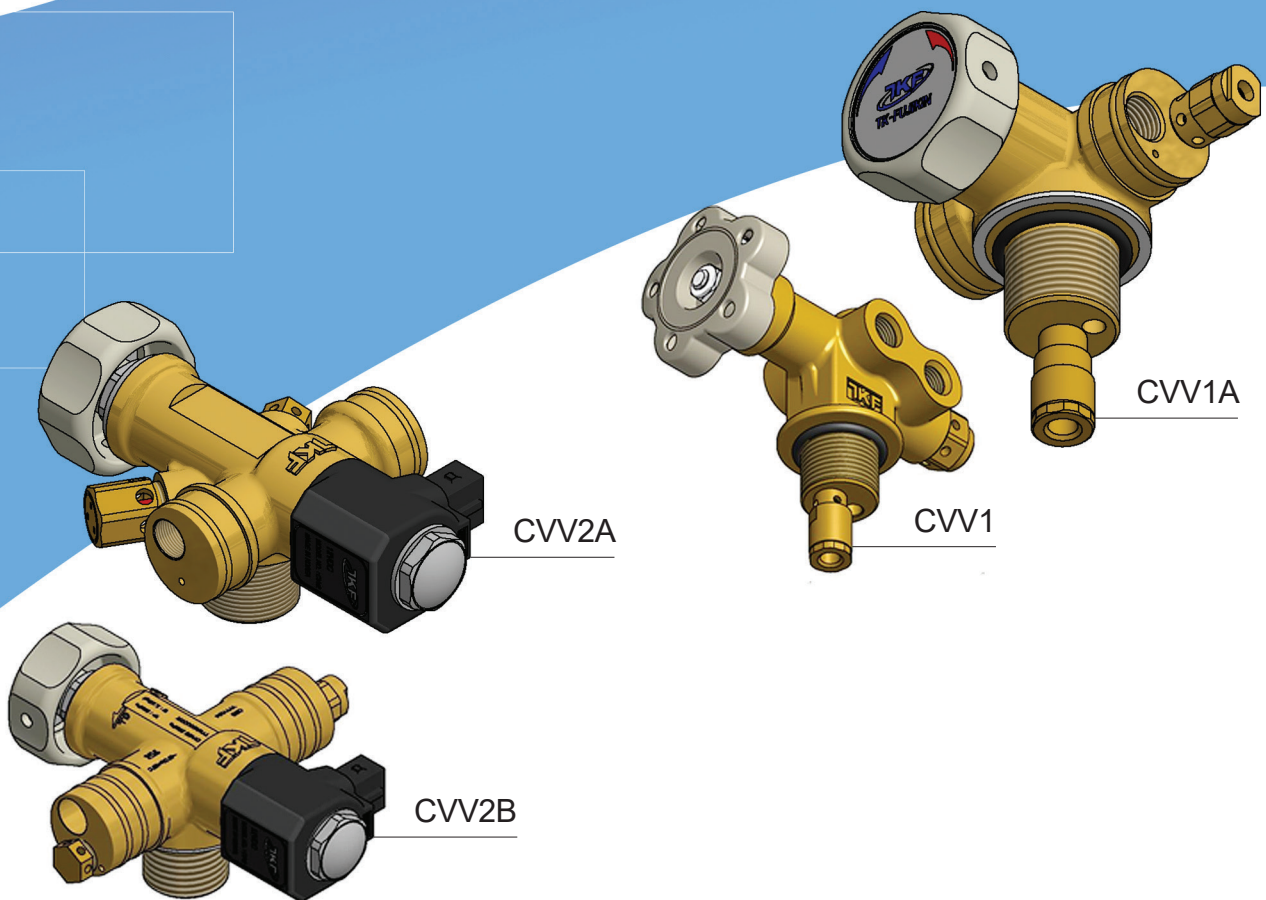


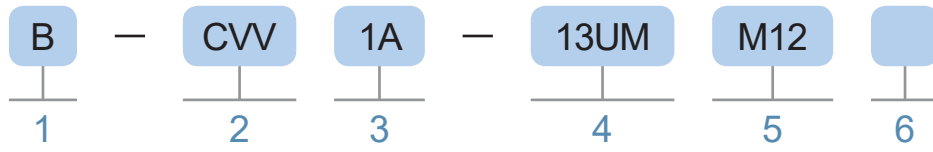
CNG Cylinder Valves



CVV SERIES

- Maximum Working Pressure : 26 MPa(3,770 psi)
- PRD Activation Temperature : 110 °C(±10 °C)
- Working Temperature : -40 °C/+85°C

ORDERING INFORMATION



1. MATERIAL DESIGNATOR

Description	Designator
Brass	B

2. VALVE SERIES

Description	Designator
CNG Vehicle Valve	CVW

3. VALVE TYPE

CVW Type	Designator
Manual Cylinder Valve	1
Automatic Cylinder Valve	2
Compact Manual Cylinder Valve	1A
Compact Automatic Cylinder Valve	2A
Special Automatic Cylinder Valve	2B

4. CYLINDER CONNECTIONS

Description	Designator
W28.8-DIN477 1" BS341 W27.8 GOST 9909-81	25EM
3/4-14 NGT	12GM
3/4-14 NPT	12NM
3/4-14 BSPT	12PTM
1 1/8-12 UNF 2A	13UM

5. INLET/OUTLET CONNECTIONS

Description	Designator
M10X1.0	M10
M12X1.0	M12
M14X1.0	M14
1/8-27 NPT	2NF
1/4-18 NPT	4NF
G 1/4(PF 1/4)	4PFF
7/16-20UNF	4UF
1/2-20UNF	5UF
9/16-18UNF	6UF

6. PRD VENTING OUTLET CONNECTIONS

Description	Designator
M10X1.0	M10
M12X1.0	M12
M14X1.0	M14
1/8-27 NPT	2NF
1/4-18 NPT	4NF
G 1/4(PF 1/4)	4PFF
7/16-20UNF	4UF
1/2-20UNF	5UF
9/16-18UNF	6UF

CNG CYLINDER VALVE

Series	Type	Seat Orifice	Working Pressure(bar)
CVV1	Manual	6mm	26 MPa(260 bar)
CVV1A	Manual	6mm	
CVV2	Automatic	6mm	
CVV2A	Automatic	6mm	
CVV2B	Automatic	6mm	

FEATURES

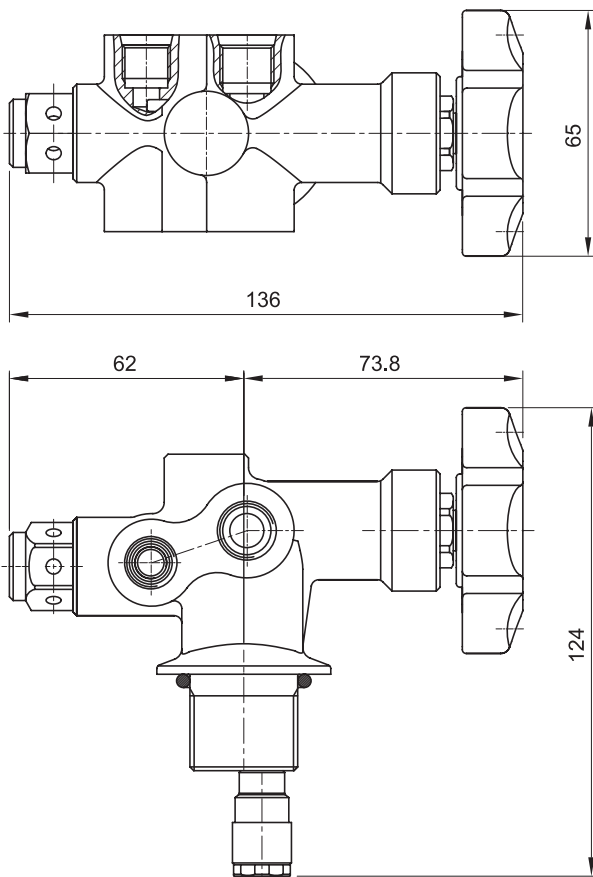
- Thermal Safety(PRD) Available Upon Request
- Bursting Disc Available Upon Request
- Excess Flow Valve Available Upon Request
- 12V And 24V Coil Connections (Automatic Valve)

TECHNICAL DATA

- Max. Working Pressure : 26 MPa(3,770 psi)
- Test Pressure : 39 MPa(5,656 psi)
- Hydraulic Collapse Pressure : 65 MPa(9,427 psi)
- Working Temperature : -40 °C/+85 °C
- PRD Activation Temperature : 110 °C±10 °C
- Burst Disc(Optional) : 34 MPa(4,931 psi)±10%
- Excess Flow Valve : ΔP (Valve Activation) : 0.65 MPa

MANUAL CNG CYLINDER VALVE

CVW1

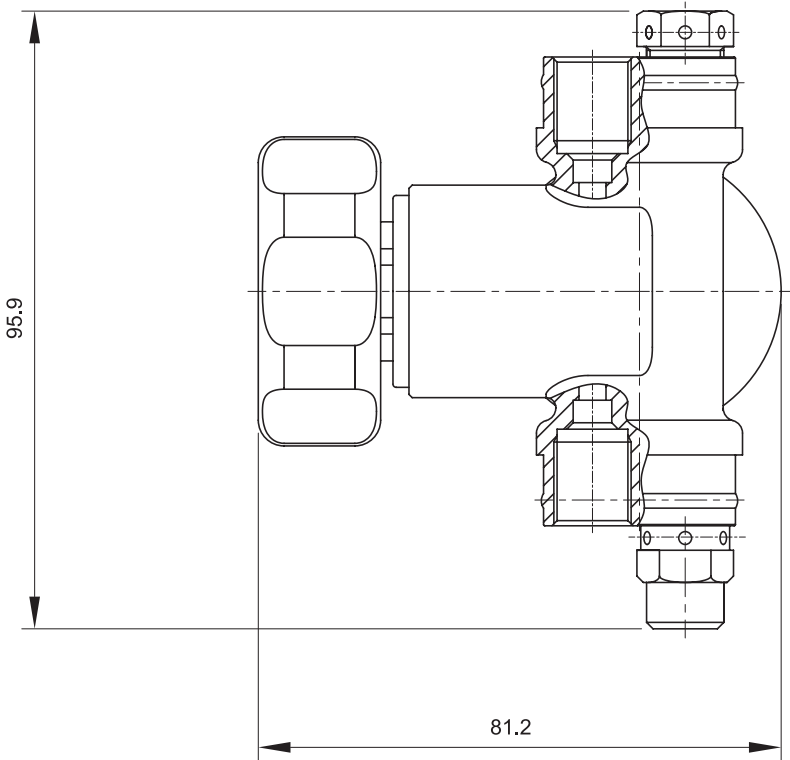


- Manual Cylinder Valve
- Max Working Pressure : 260 bar
- Working Temperature : -40 °C/+85 °C
- Excess Flow Valve Available Upon Request
- High Flow Valve For Heavy Duty Application
- Glass Bulb TPRD : 110 °C(±10 °C)
- Safety Venting Port

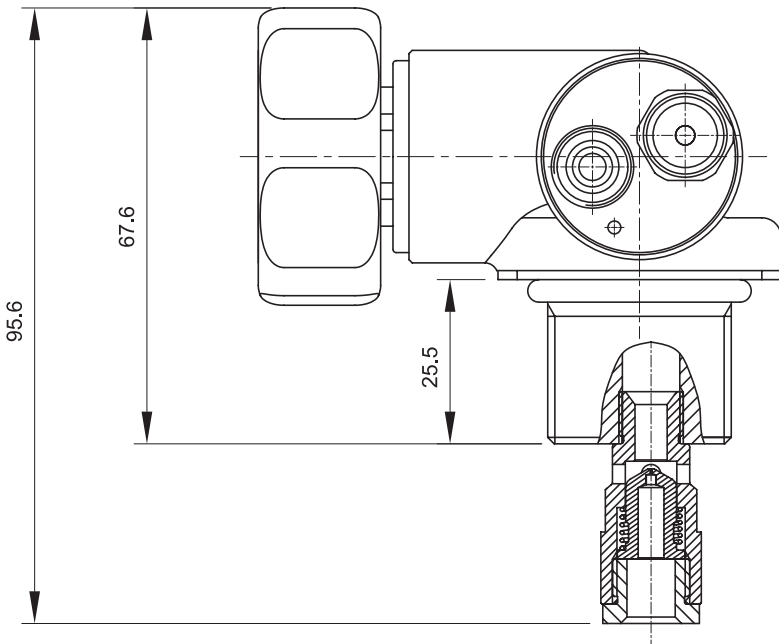
CV1A

CNG CYLINDER VALVES

GI PRODUCTS / VALVE SERIES

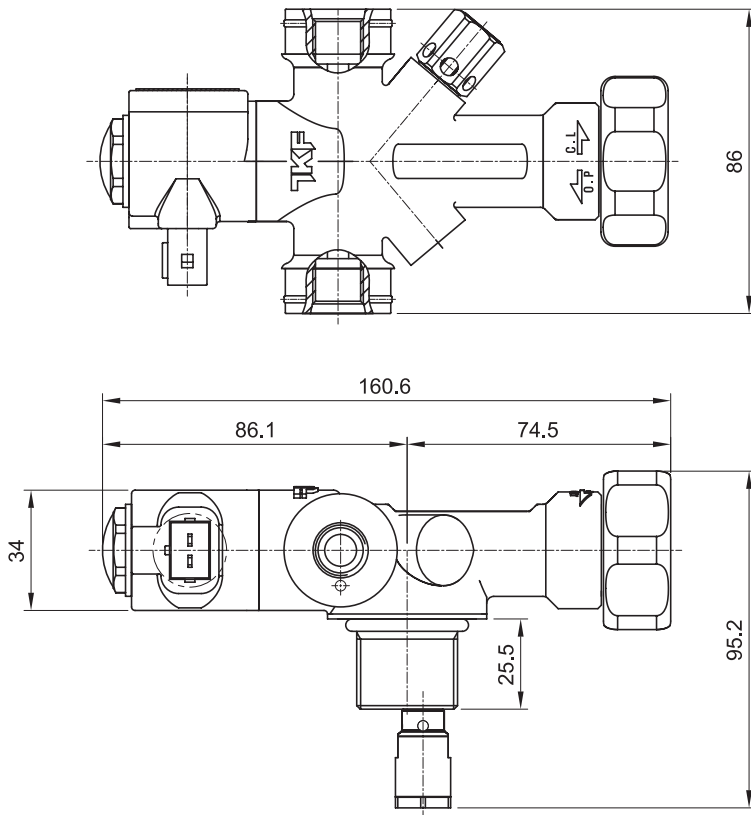


- Manual Cylinder Valve With Internal Venting System
- Max Working Pressure : 260 bar
- Working Temperature : -40 °C/+85 °C
- Thermal Safety Valve (PRD)
- Excess Flow Valve
- Burst Disc Available Upon Request



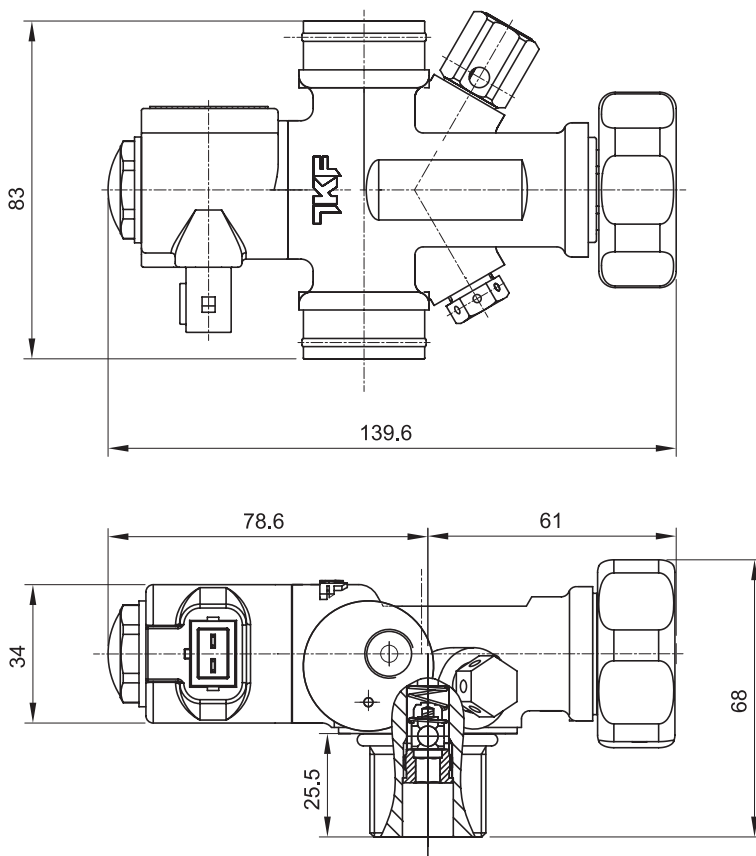
AUTOMATIC CNG CYLINDER VALVE

CV2



- Automatic Cylinder Valve
- Max Working Pressure : 260 bar
- Working Temperature : -40 °C/+85 °C
- Burst Disc Available Upon Request
- Excess Flow Valve
- Low Absorption Solenoid Valve
- Specific For Low Temperature
- Glass Bulb TPRD

CV2A

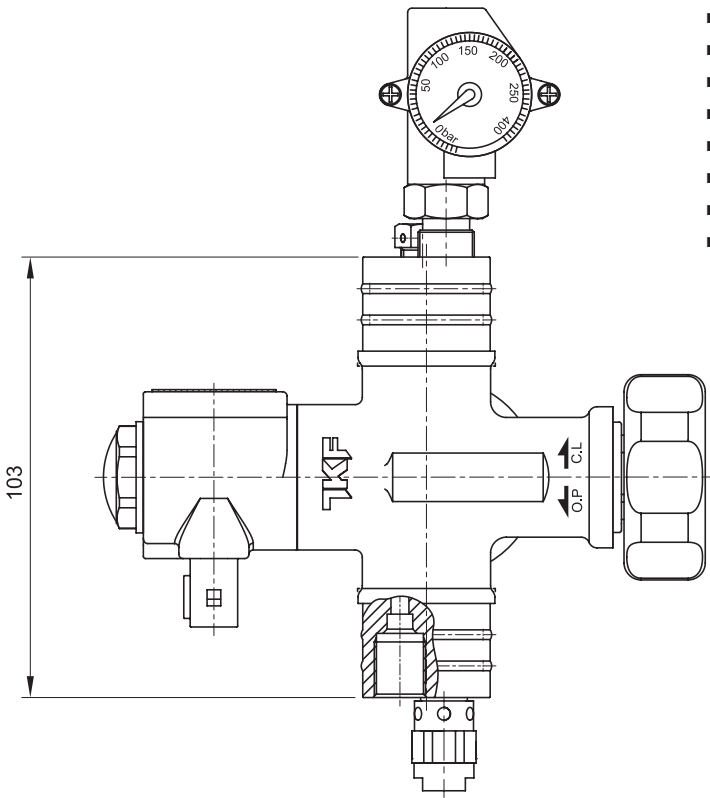


- Automatic Cylinder Valve With Internal Venting System
- Design Compact
- Max Working Pressure : 260 bar
- Working Temperature : -40 °C/+85 °C
- Thermal Safety Valve (PRD)
- Burst Disc Available Upon Request
- Excess Flow Valve (Insert Type)
- Low Absorption Solenoid Valve
- Specific For Low Temperature
- Glass Bulb TPRD

CW2B

CNG CYLINDER VALVES

GI PRODUCTS / VALVE SERIES



- Automatic Cylinder Valve With Internal Venting System
- Max Working Pressure : 260 bar
- Working Temperature : -40 °C/+85 °C
- Thermal Safety Valve (PRD)
- Burst Disc Available Upon Request
- Excess Flow Valve (Insert Type)
- Low Absorption Solenoid Valve
- Specific For Low Temperature

